

PROJECT REFERENCE NO.		SHEET NO.	
U-2734		2-Y	
R/W SHEET NO.			
ROADWAY DESIGN ENGINEER		HYDRAULICS ENGINEER	
		SHEET 5	

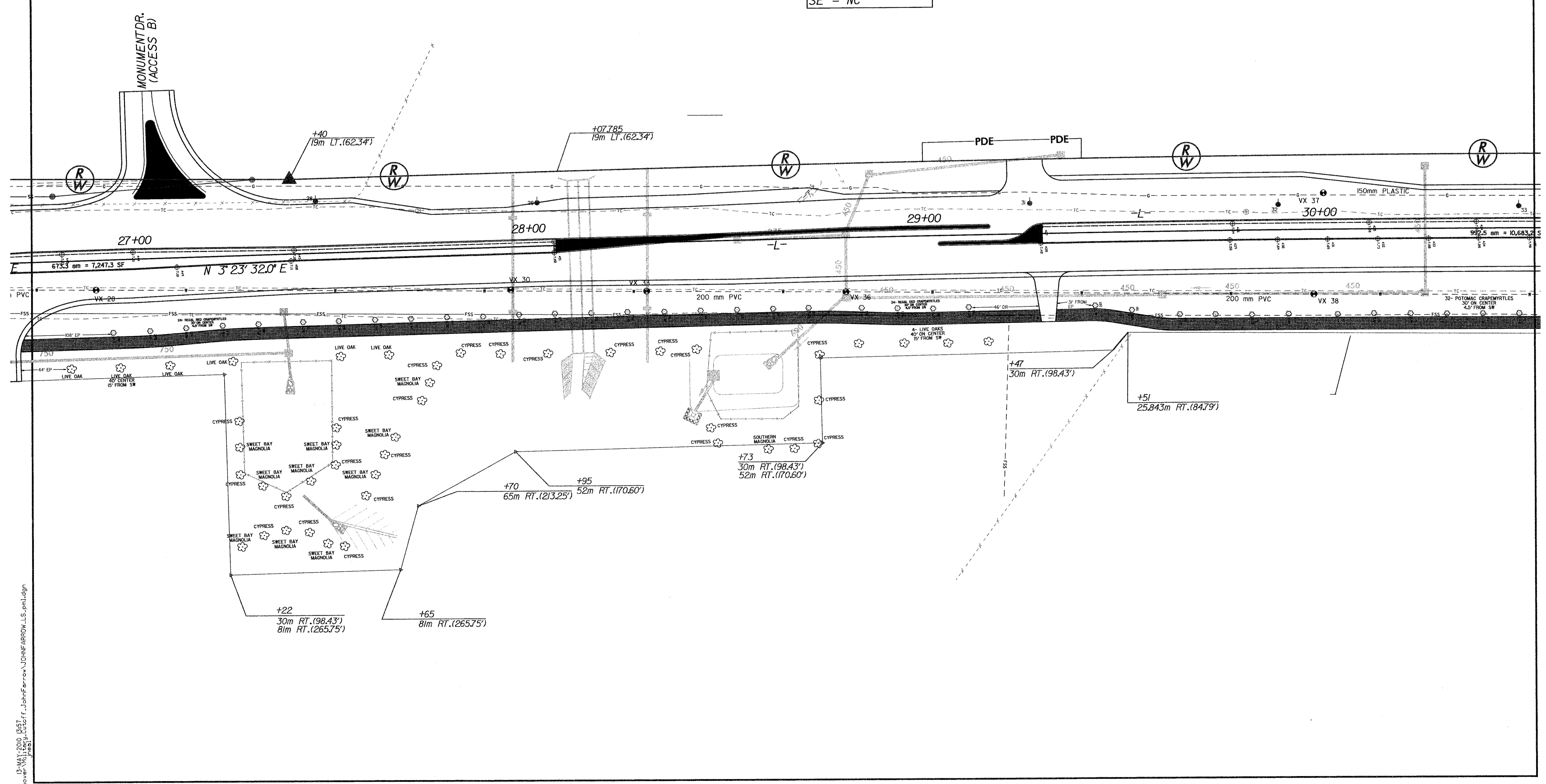


CONST. REV.

R/W REV.

-L-
 PI Sta. 30+38.034
 $\Delta = 2^\circ 55' 51.5''$ (RT)
 L = 460.397
 T = 230.249
 R = 9,000.000
 SE = NC

REVISIONS

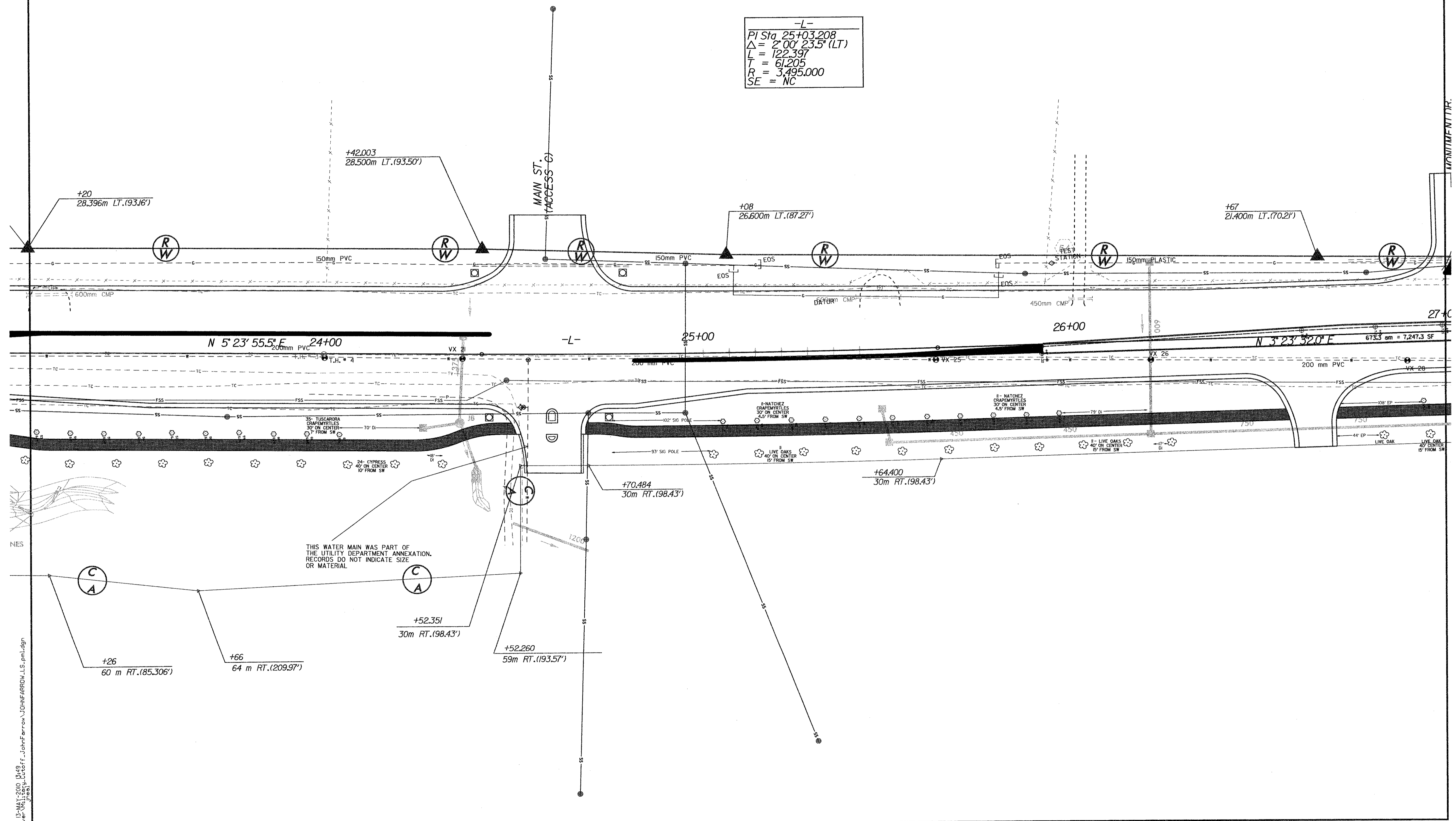


REVISIONS

	PROJECT REFERENCE NO.	SHEET NO.
	U-2734	2-Y
	ROADWAY DESIGN ENGINEER	HYDRAULICS ENGINEER
CONST.REV.	SHEET	
R/W REV.	4	

-L-

PI Sta 25+03.208
 $\Delta = 2^{\circ}00'23.5''$ (LT)
 $L = 122.397$
 $R = 61.205$
 $SE = 3,495.000$
 $SE = NC$



15-MAY-2010 13:49
 H:\enover\W\115671\115671.ctb
 JohnFarrow\JOHN.FARROW.LLS.pml.dgn

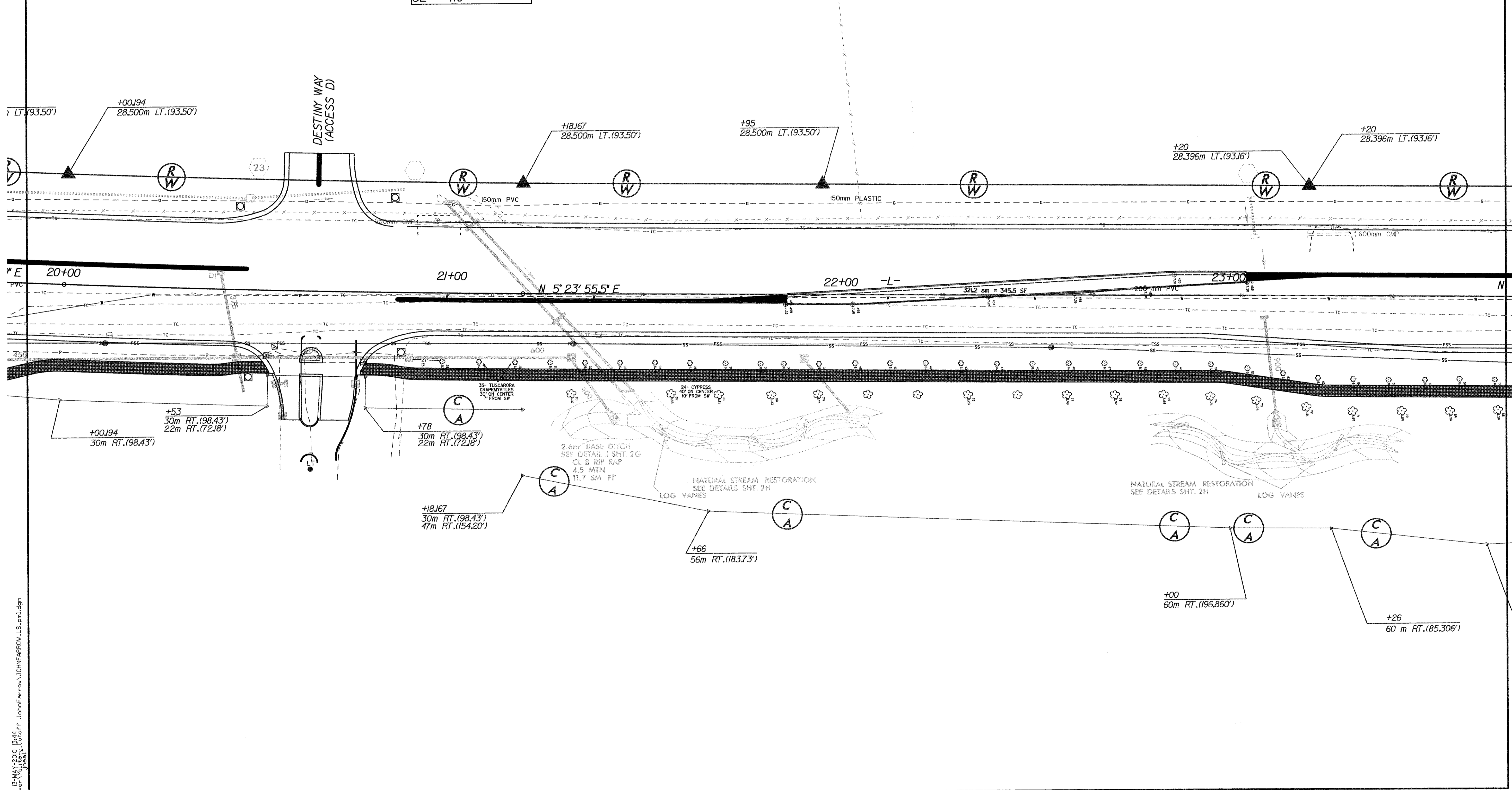
PROJECT REFERENCE NO.		SHEET NO.	
U-2734		2-Y	
R/W SHEET NO.			
ROADWAY DESIGN ENGINEER		HYDRAULICS ENGINEER	
		SHEET 3	
CONST. REV.			
R/W REV.			

METRIC

0



REVISIONS

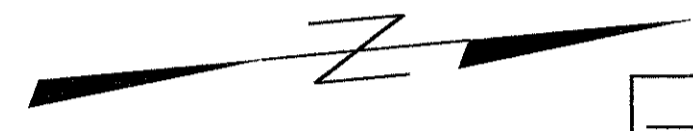
-L-
 PI Sta 20+591.86
 $\Delta = 156' 02.5" (LT)$
 $L = 117.974$
 $T = 58.992$
 $R = 3,495.000$
 SE = NC



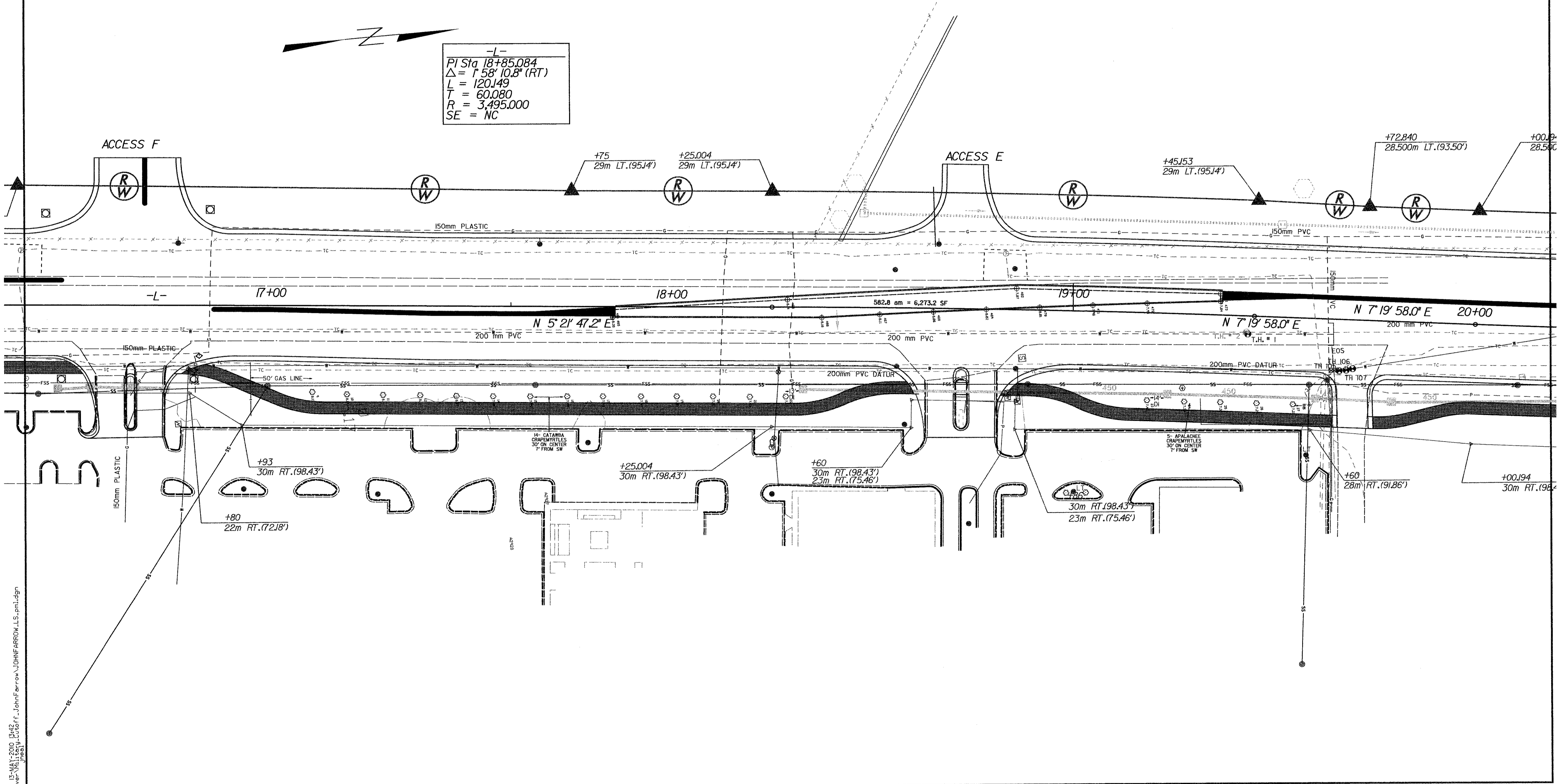
E:\W\1200_1244\Drawings\JohnFarrow\JOHN FARROW.LLS.pml.dgn
 11/20/2013 11:20:13 AM
 John Farrow

REVISIONS

  CONST.REV. R/W REV.	PROJECT REFERENCE NO. U-2734	SHEET NO. 2-Y
	R/W SHEET NO.	
ROADWAY DESIGN ENGINEER	HYDRAULICS ENGINEER	
SHEET 2		



-L-
 PI Sta 18+85.084
 $\Delta = 158^{\circ} 10.8' (RT)$
 $L = 120.149$
 $T = 60.080$
 $R = 3,495.000$
 SE = NC



15-MAY-2010 13:42
 Hanover\Projects\1501\1501.ctb
 JohnFarro\JOHN.FARRO.LL.S.pml.dgn

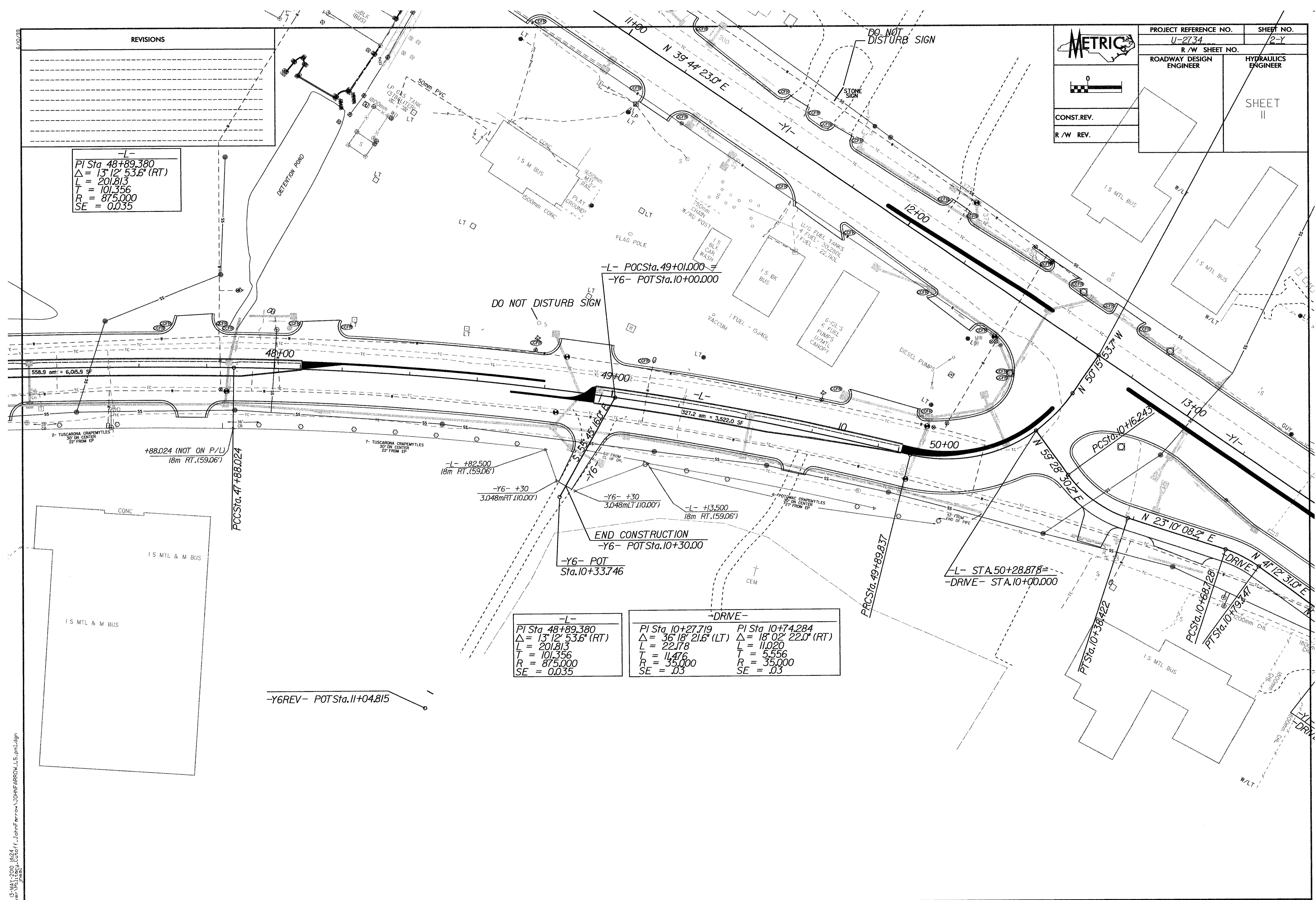
METRIX 0 10 20 30 40 50 CONST. REV. R/W REV.	PROJECT REFERENCE NO. U-2734	SHEET NO. 2-Y
	R/W SHEET NO.	
ROADWAY DESIGN ENGINEER	HYDRAULICS ENGINEER	
SHEET II		

REVISIONS

-L-
PI Sta 48+89.380
 $\Delta = 13^\circ 12' 53.6" (RT)$
L = 201.813
T = 101.356
R = 875.000
SE = 0.035

-L-		
PI Sta 48+89.380	$\Delta = 13^\circ 12' 53.6" (RT)$	
L = 201.813	T = 101.356	
R = 875.000	SE = 0.035	

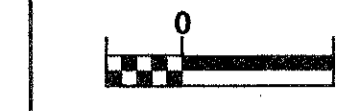
-DRIVE-		
PI Sta 10+27.719	$\Delta = 36^\circ 18' 21.6" (LT)$	PI Sta 10+74.284
L = 22.178	T = 11.476	L = 11.020
R = 35.000	R = 35.000	T = 5.556
SE = .03		SE = .03



13- MAY 2000 8:54 AM
D:\proj\2000\1125\F1125\F1125.dgn
John Farrow

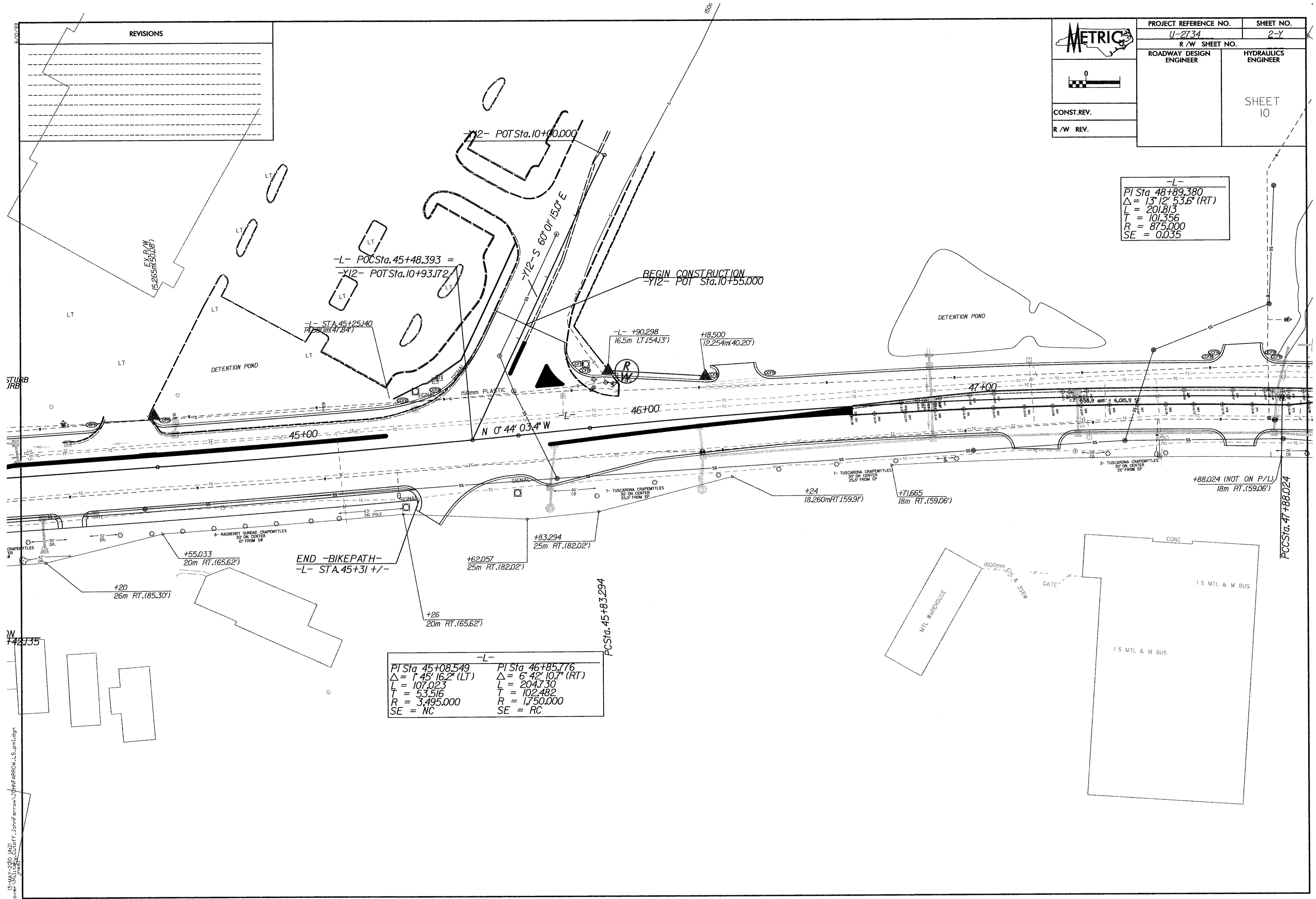


PROJECT REFERENCE NO.	SHEET NO.
U-2734	2-Y
R/W SHEET NO.	
ROADWAY DESIGN ENGINEER	HYDRAULICS ENGINEER
	SHEET 10




CONST. REV.
R/W REV.

-L-
PI Sta 48+89.380
 $\Delta = 13' 12" 53.6" (RT)$
L = 201.813
T = 101.356
R = 875.000
SE = 0.035




12-MAY-2010 14:21
 snowe\williams\cort\john.farrow\jhf.farrow\LS_pml.dgn
 jmes

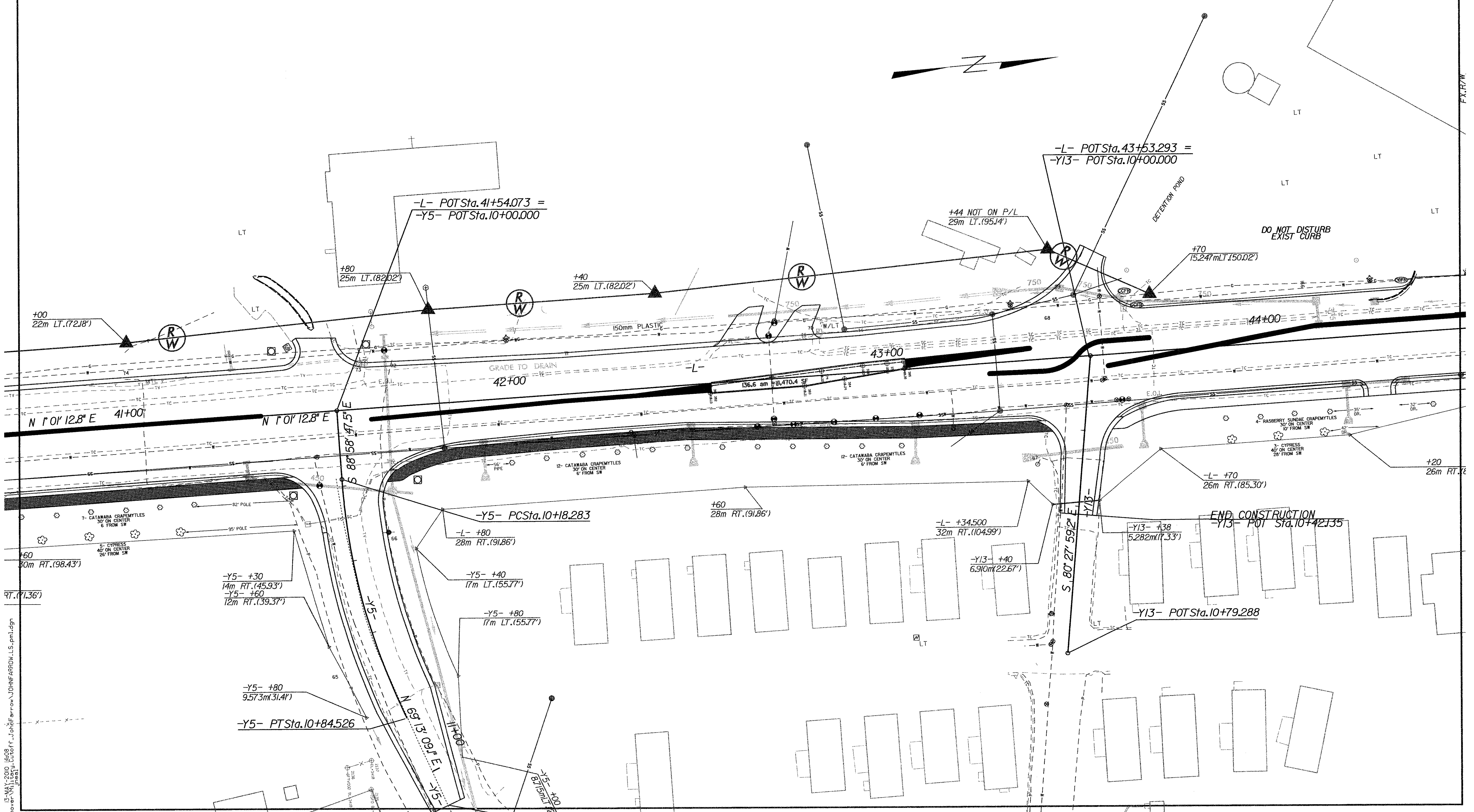
REVISIONS



PROJECT REFERENCE NO. U-2734	SHEET NO. 2-Y
R/W SHEET NO.	
ROADWAY DESIGN ENGINEER	HYDRAULICS ENGINEER
SHEET 9	



CONST.REV.
R/W REV.



13-MAY-2010 14:08
 n:\projects\2010\4608\proj\13-MAY-2010 14:08\road\VDWF\ROAD\LS.plm\ldgn

STATE OF NORTH CAROLINA
DIVISION OF HIGHWAYS
QUANTITY SHEET

Tree Type	Quantity
Apalache Crapemyrtle	5
Catawba Crapemyrtle	33
Natchez Crapemyrtle	21
Potamac Crapemyrtle	39
Raspberry Sundae Crapemyrtle	12
Regal Red Crapemyrtle	41
Tuscarora Crapemyrtle	51
Cypress	59
Live Oaks	25
Southern Magnolia	4
Sweet Bay Magnolia	10
P. Palms	3
PBA Palms	1
Total	304

9/09/99

TIP PROJECT U-2734

CONTRACT: C200867

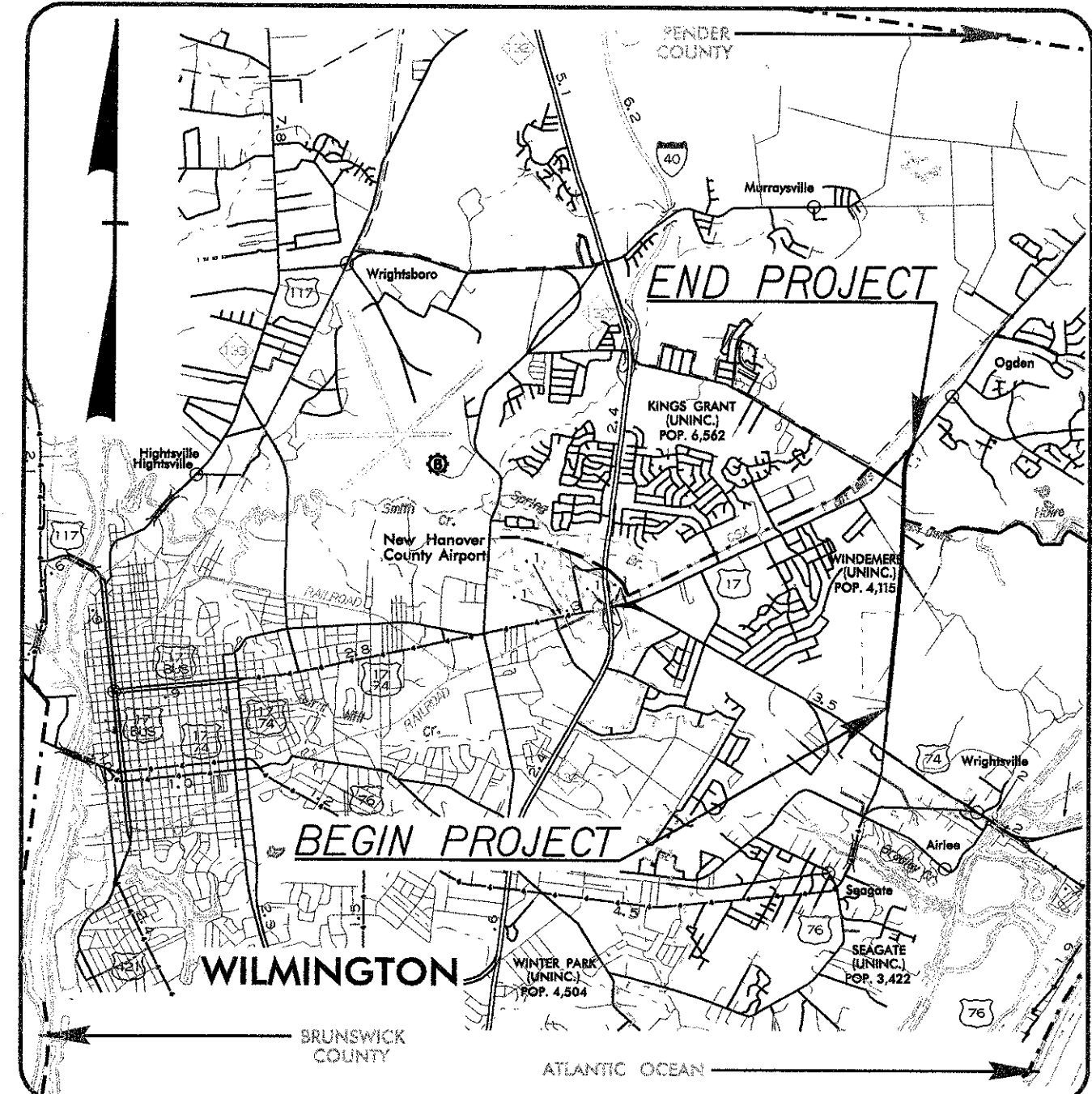
See Sheet 1-A For Index of Sheets
See Sheet 1-B For Conventional Symbols

STATE OF NORTH CAROLINA
DIVISION OF HIGHWAYS

NEW HANOVER COUNTY

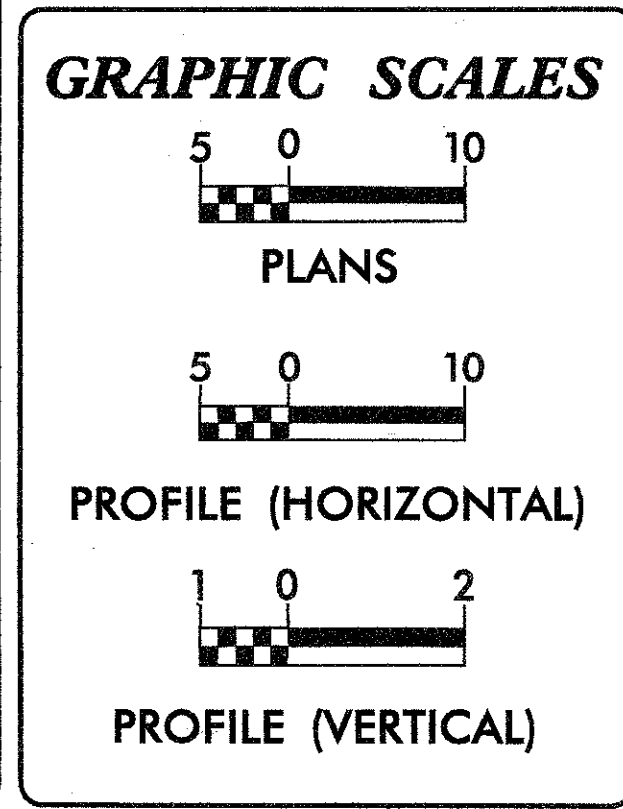
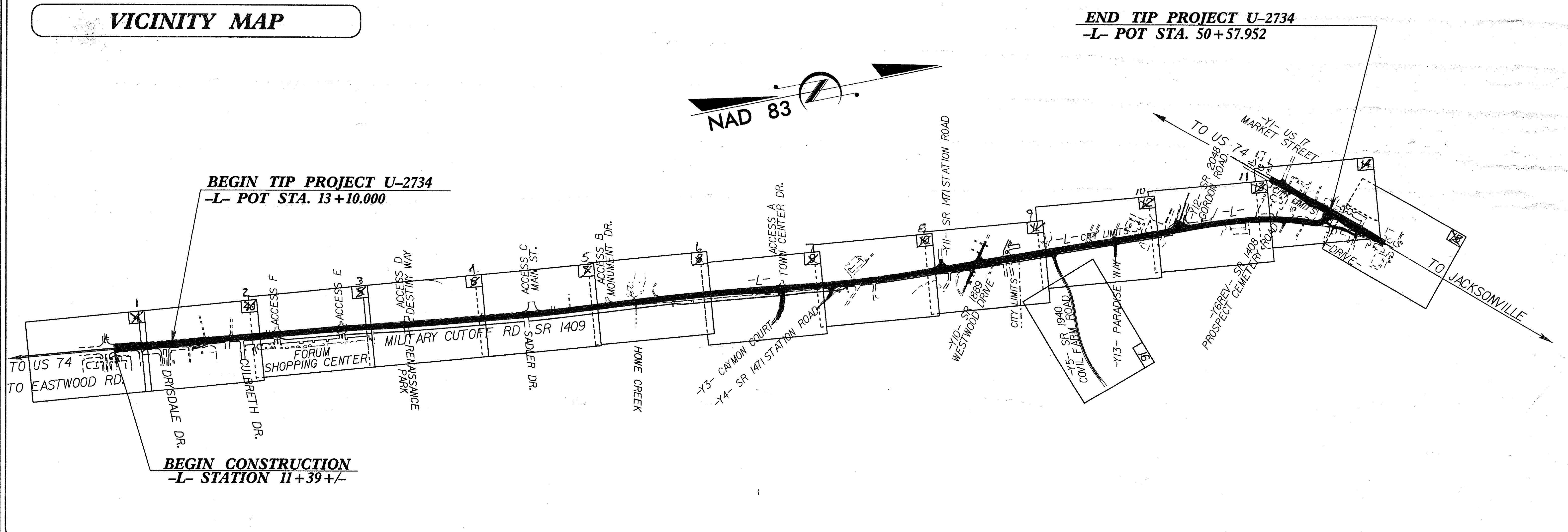
METRIC
ALL DIMENSIONS IN THESE PLANS ARE IN METERS UNLESS OTHERWISE SHOWN

STATE	STATE PROJECT REFERENCE NO.	SHEET NO.
N.C.	U-2734	1
STATE PROJ. NO.	F.A. PROJ. NO.	DESCRIPTION
34857.1.1	NHF-1409(3)	P.E.
34857.2.2	NHF-1409(3)	RW, UTILITY
34857.3.2	NHF-1409(5)	CONST.



**LOCATION: WILMINGTON - SR 1409 (MILITARY CUTOFF ROAD)
FROM DRYSDALE DR. NORTH OF US 74 TO US 17 (MARKET ST.)**

TYPE OF WORK: WIDENING, GRADING, DRAINAGE, PAVING, SIGNALS, CULVERT



DESIGN DATA

ADT 2004 = 33,700 vpd
ADT 2024 = 55,500 vpd

DHV = 10 %
D = 60 %
T = 8 % *
V = 80 km/h

* TTST 3 % + DUAL 5 %

PROJECT LENGTH

TOTAL LENGTH FA PROJECT NHF=1409(5) = 3.748km

TOTAL LENGTH TIP PROJECT U-2734 = 3.748km

Prepared In the Office of:
DIVISION OF HIGHWAYS
1000 Birch Ridge Dr., Raleigh, NC 27610

2002 STANDARD SPECIFICATIONS

RIGHT OF WAY DATE:
FEBRUARY 21, 2003

LETTING DATE:
APRIL 20, 2004

GARY LOVERING, P.E.
PROJECT ENGINEER

ANTHONY C. WEST
PROJECT DESIGN ENGINEER

HYDRAULICS ENGINEER

SIGNATURE: _____ P.E.

ROADWAY DESIGN ENGINEER

SIGNATURE: _____ P.E.

DIVISION OF HIGHWAYS
STATE OF NORTH CAROLINA

STATE DESIGN ENGINEER

DEPARTMENT OF TRANSPORTATION
FEDERAL HIGHWAY ADMINISTRATION

APPROVED
DIVISION ADMINISTRATOR

13-MAY-2010 14:43
W:\Urban\NewHanover\U2734_MC_w11m\From_Roadway_051110\Roadway_U2734.tsh